



Hazardous Weather Briefing

**National Weather Service
Little Rock, Arkansas**

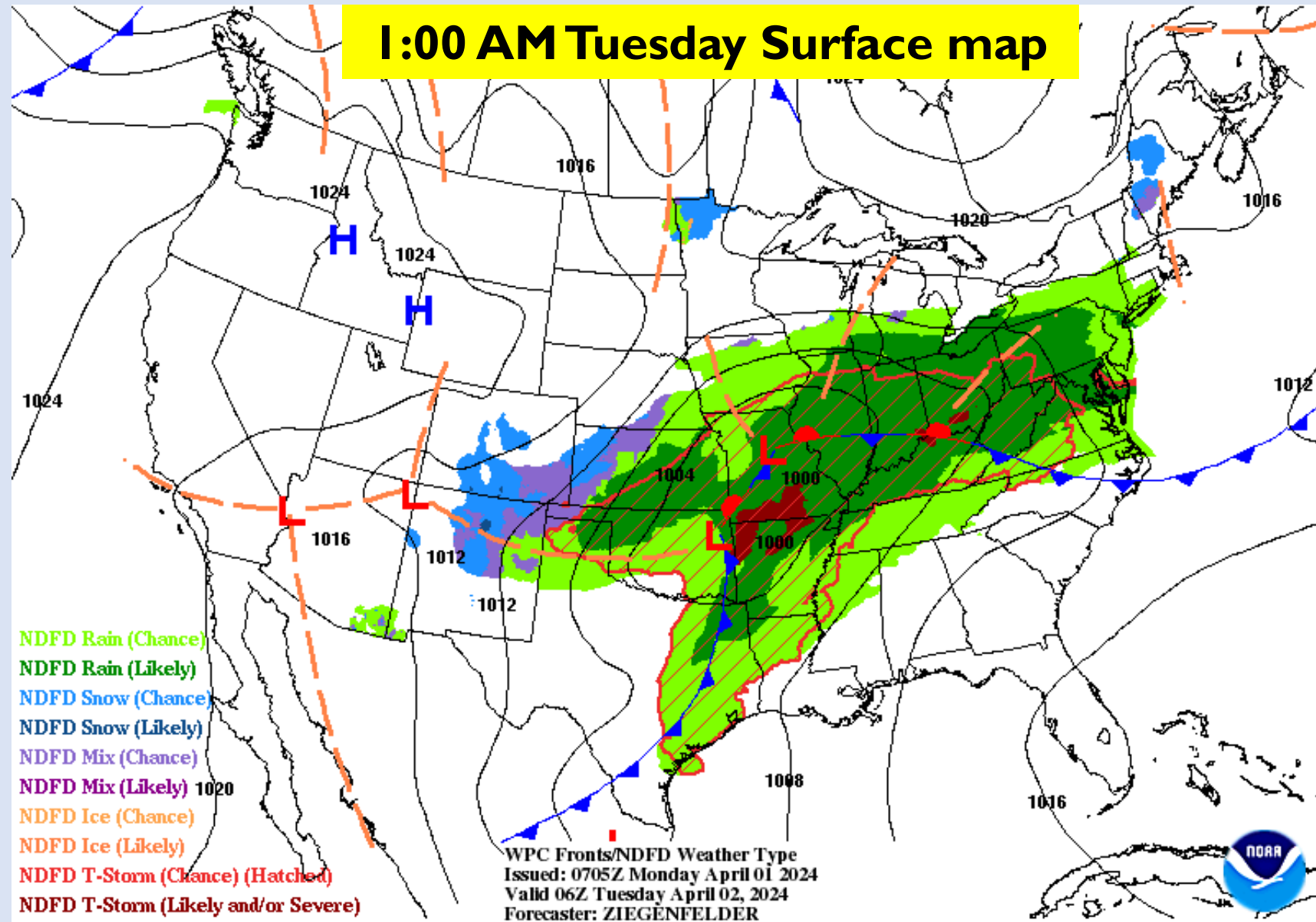
**April 1, 2024
5:30 AM CDT**



- Showers and thunderstorms are expected to develop Monday evening and into early Tuesday morning ahead of an approaching cold front. The computer models continue their trend of late in slowing the system down.
- Some storms are expected to become strong to severe, especially over the northwest half of Arkansas. These locations will have the greatest overlap of severe thunderstorm ingredients Monday evening and into early Tuesday. While all severe weather hazards will be possible, large hail and damaging winds will be the primary concerns and isolated tornadoes will be possible.
- Large hail and damaging straight-line winds are possible across the rest of the state as well, but chances decrease toward the south and east as the storms are forecast to weaken.
- Southerly winds gusting upwards of 30 mph will be possible on Monday afternoon and evening.



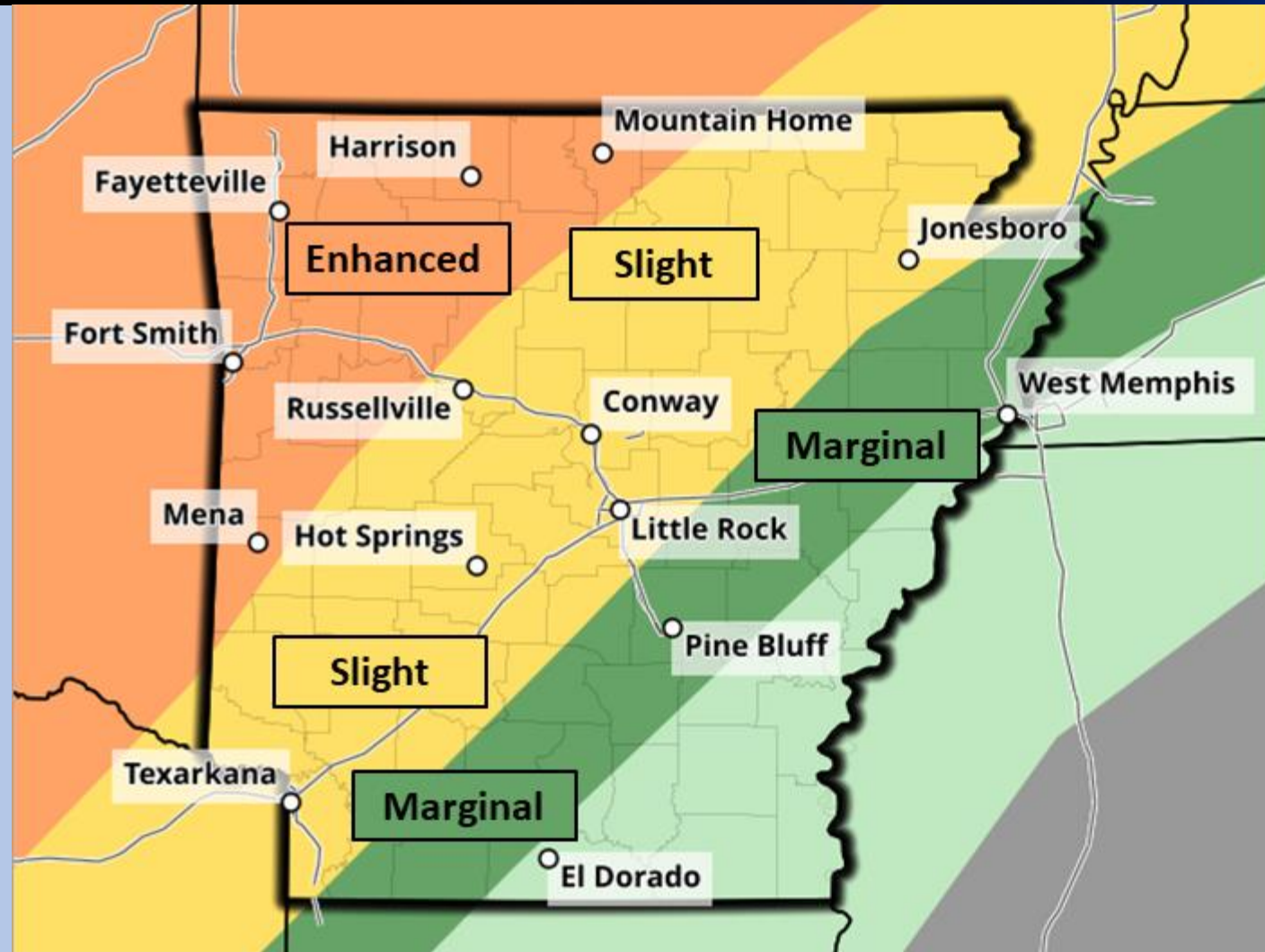
1:00 AM Tuesday Surface map



A strong cold front will move across the state on Monday night resulting in numerous showers and thunderstorms developing ahead of the frontal boundary.

There will be a substantial amount of wind energy surrounding this system and where instability is greatest, all severe weather hazards are possible (mainly the northwest half of Arkansas and adjacent portions of Oklahoma and Missouri).

Severe Weather Outlook: Monday Evening into Monday Night



Tornado Potential
High
Medium
Low
Very Low

Maximum Hail Size
Up to Softball
Up to Baseball
Up to Golf ball
Up to Quarter

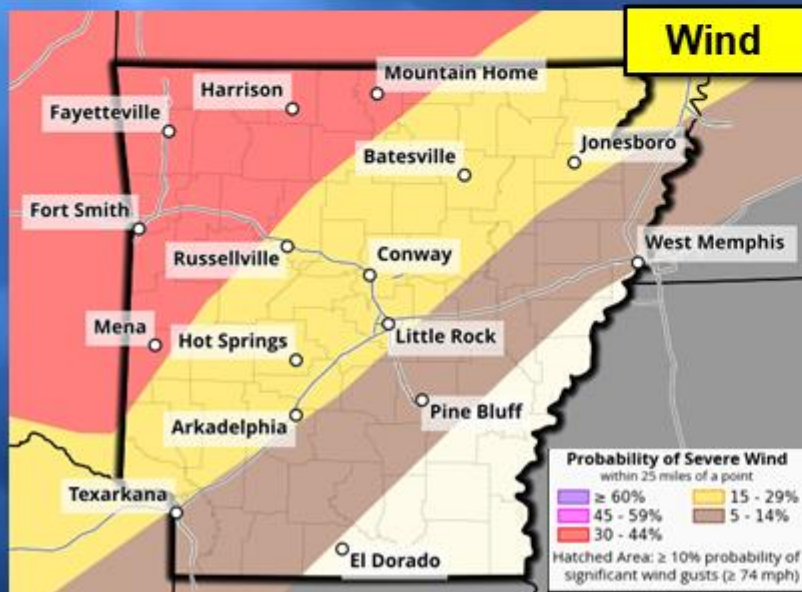
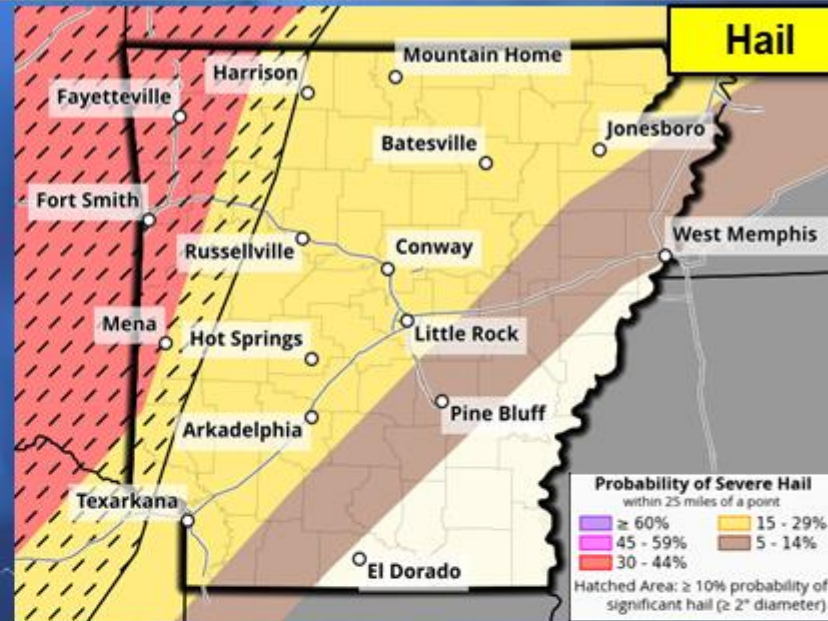
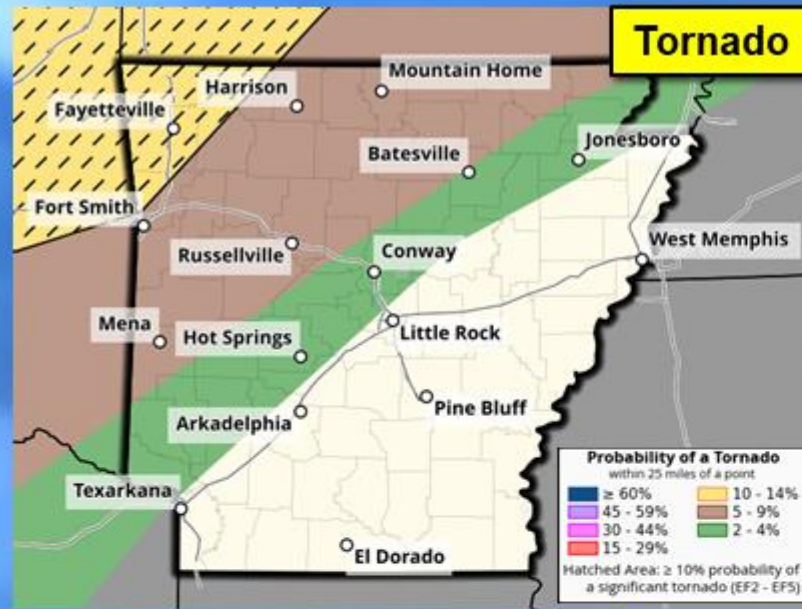
Maximum Wind Speed
80+ mph
60-80 mph
Up to 60 mph

Monday evening and into Monday night, there will be a window for strong to severe thunderstorms to develop and move over the northwest half of Arkansas. All types of severe weather could occur in these areas.

Large hail and damaging winds are possible across the southeast half of the state but confidence in severe thunderstorms is lower.

Strong to severe thunderstorms are expected to move into the northwest half of Arkansas Monday evening into Monday night. The threat of severe weather will decrease as the activity moves into the southeast half of the state.

Severe Weather Modes: Monday Evening into Monday Night



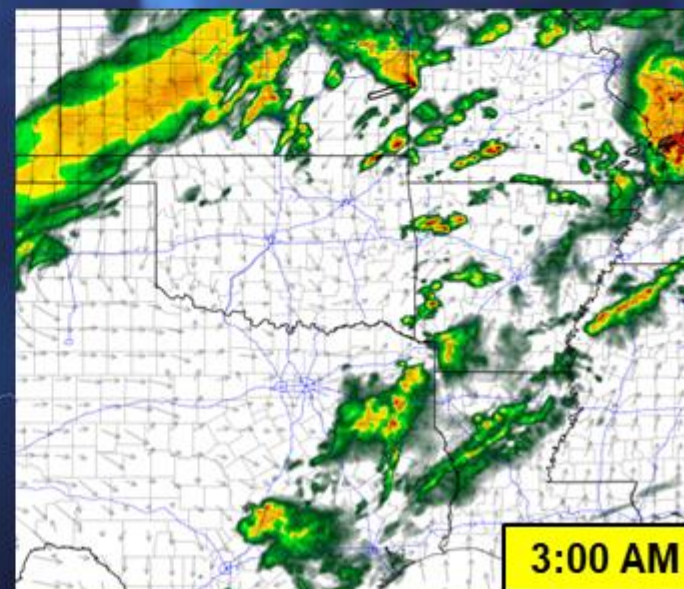
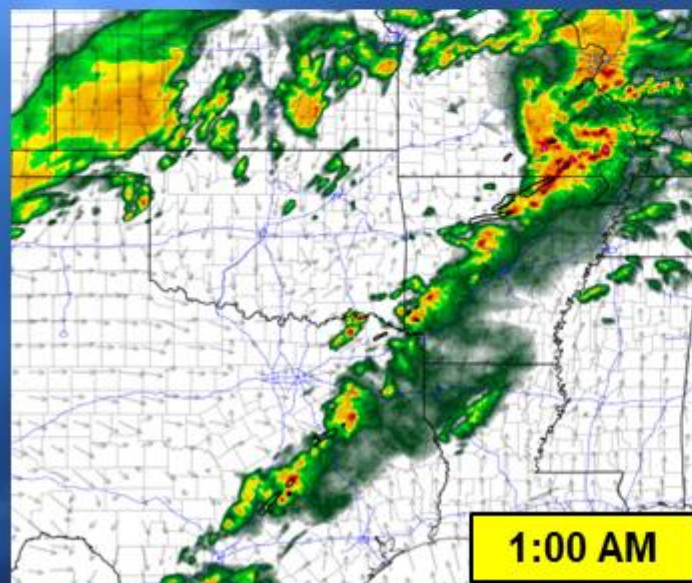
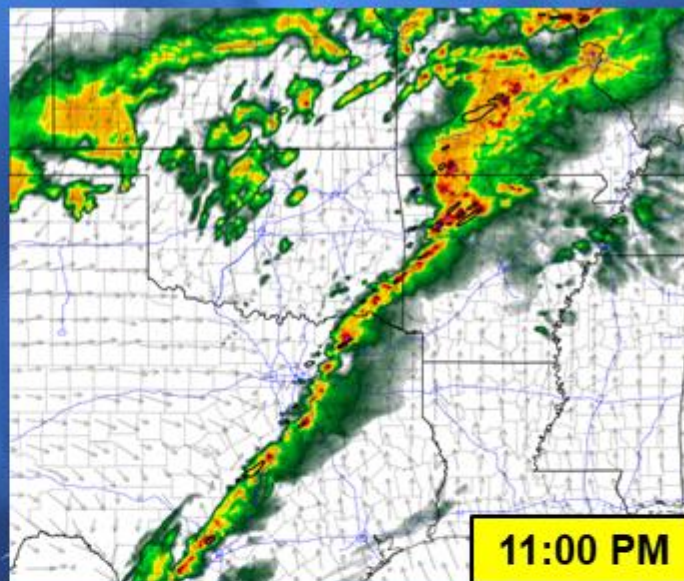
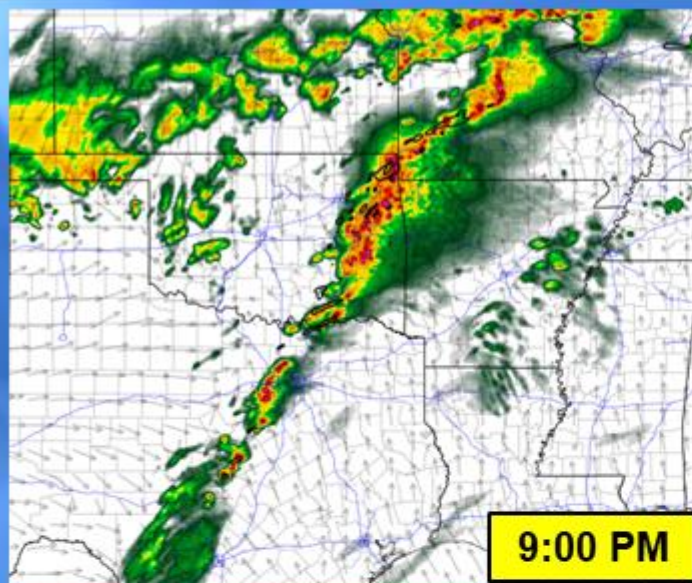
All modes of severe weather will be possible Monday evening and into Monday night. Guidance continues to show the northwest half of the state will have the best chances of strong to severe thunderstorms with decreasing chances further to the southeast

All modes of severe weather will be possible Monday evening and into Monday night.

The best chances of seeing tornadoes will be over the far northwest corner of the state with large hail and damaging wind chances much higher.

The chances of severe weather will be lower further to the southeast.

Storm Timing: Monday Evening into Monday Night (April 1)



Here is a radar simulation according to one of our computer models. Strong to possibly severe thunderstorms will form over eastern Oklahoma Monday evening and race off to the east.

Guidance continues to show the line of strong to severe storms weakening as it moves to the southeast.



Getting a warning could save **YOUR LIFE**



- #01
- #02
- #03
- #04
- #05
- #06

Use your **mobile device** to get timely weather warnings



mobile.weather.gov

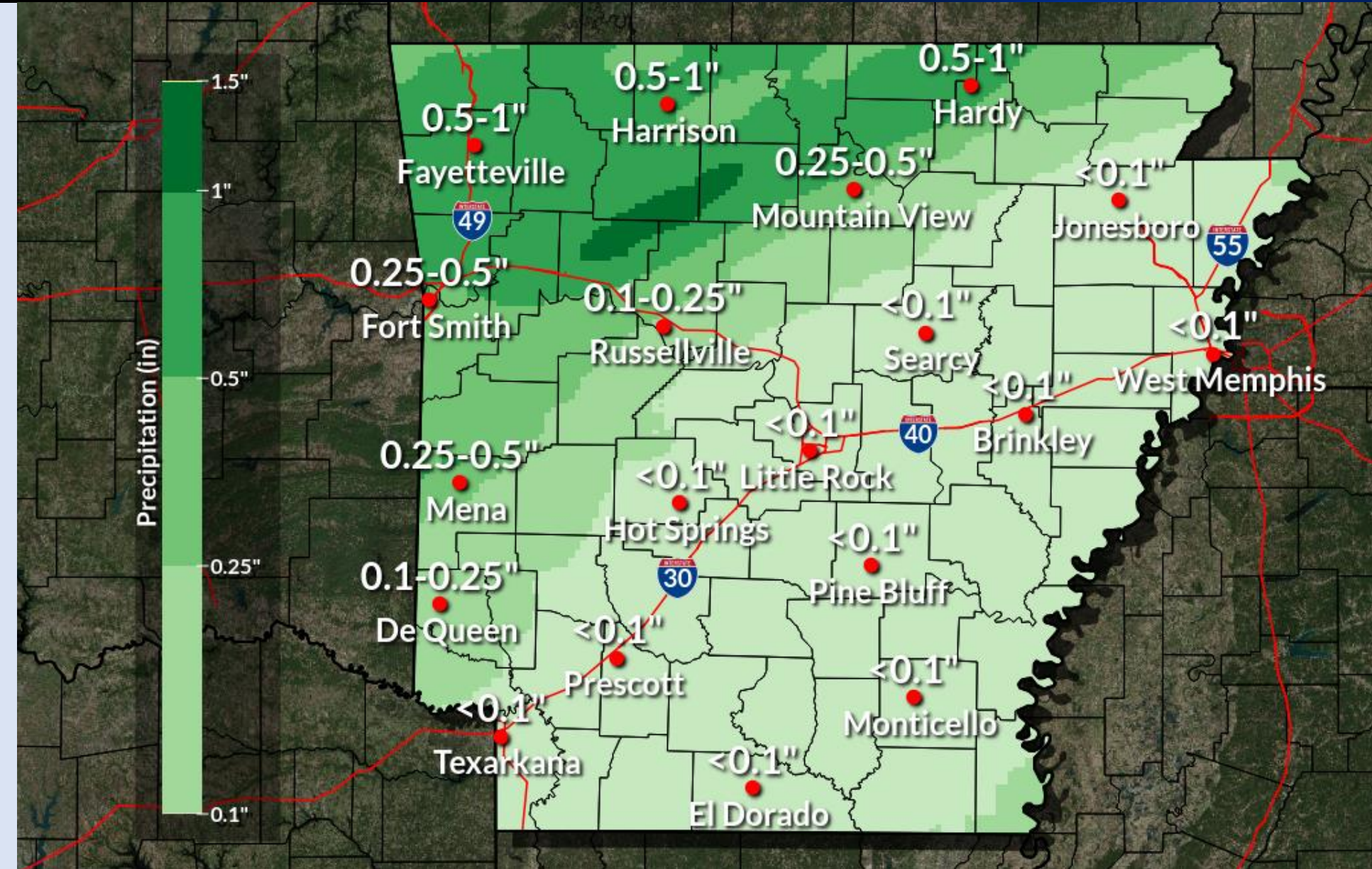
--Having multiple methods to receive weather warning information is crucial for overnight severe weather events.
--Nocturnal events (12AM and later) can lead to a false sense of security and increased vulnerability. Staying weather aware and informed can help keep you safe!



Have multiple ways to get warnings
weather.gov



Be sure to have WEA enabled on your phone, and check the batteries in your NOAA Weather Radio!



Heavy rain is not expected with this system as these storms will be moving quickly across the state.

The heaviest amounts of rain will be over the northwest and even there, amounts will average under an inch.



For the latest information



Web: <http://weather.gov/LZK>



Phone: (501) 834-0308



E-mail: sr-lzk.forecasters@noaa.gov



Facebook: NWSLittleRock



Twitter: @NWSLittleRock



YouTube: NWSLittleRock