



Severe Weather Briefing

**National Weather Service
Little Rock, Arkansas**

Jun 9, 2022 4:00 AM

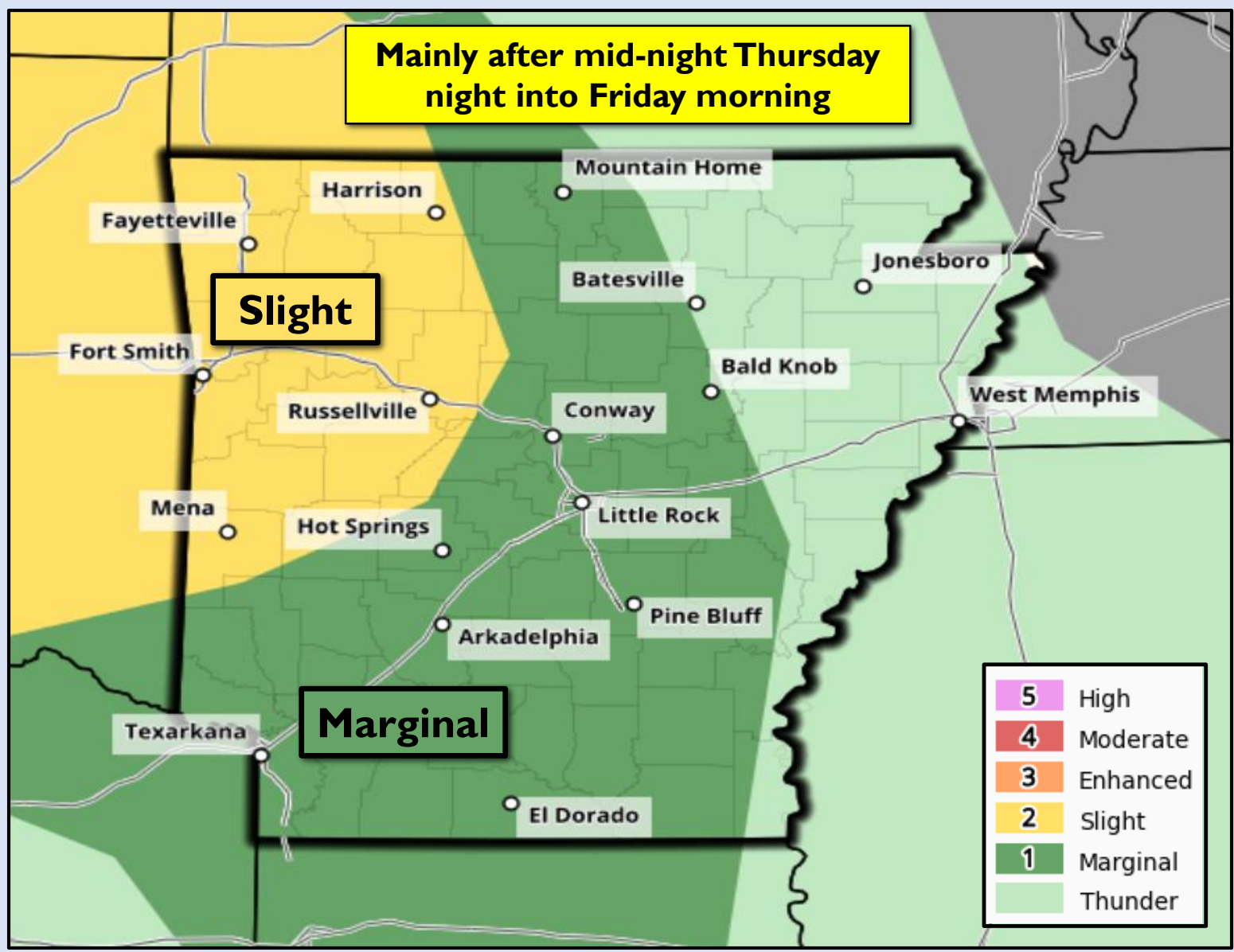


- A stationary front will be in place across the state through Friday.
- Strong to severe storms will be possible during overnight hours early Friday morning and into the daytime Friday as another complex of thunderstorms move across the state.
- Some storms may become severe, with damaging wind gusts and large hail the main concerns.
- Slow moving thunderstorms could lead to flash flooding. Additionally, several smaller tributaries remain swollen, including the Fourche LaFave, Petit Jean, and Saline rivers, and forecast rainfall will likely keep local river levels elevated.
- Hot and humid conditions are expected to be in place next week across the state which could lead to elevated and hazardous heat index values.

Severe Weather Outlook (June 9)



Thunderstorm risk map valid from Thursday 700 AM June 9 through Friday 700 AM June 10



Maximum Hail Size

- Up to Softball
- Up to Baseball
- Up to Golf ball
- Up to Quarter**

Maximum Wind Speed

- 80+ mph
- 60-80 mph
- Up to 60 mph**

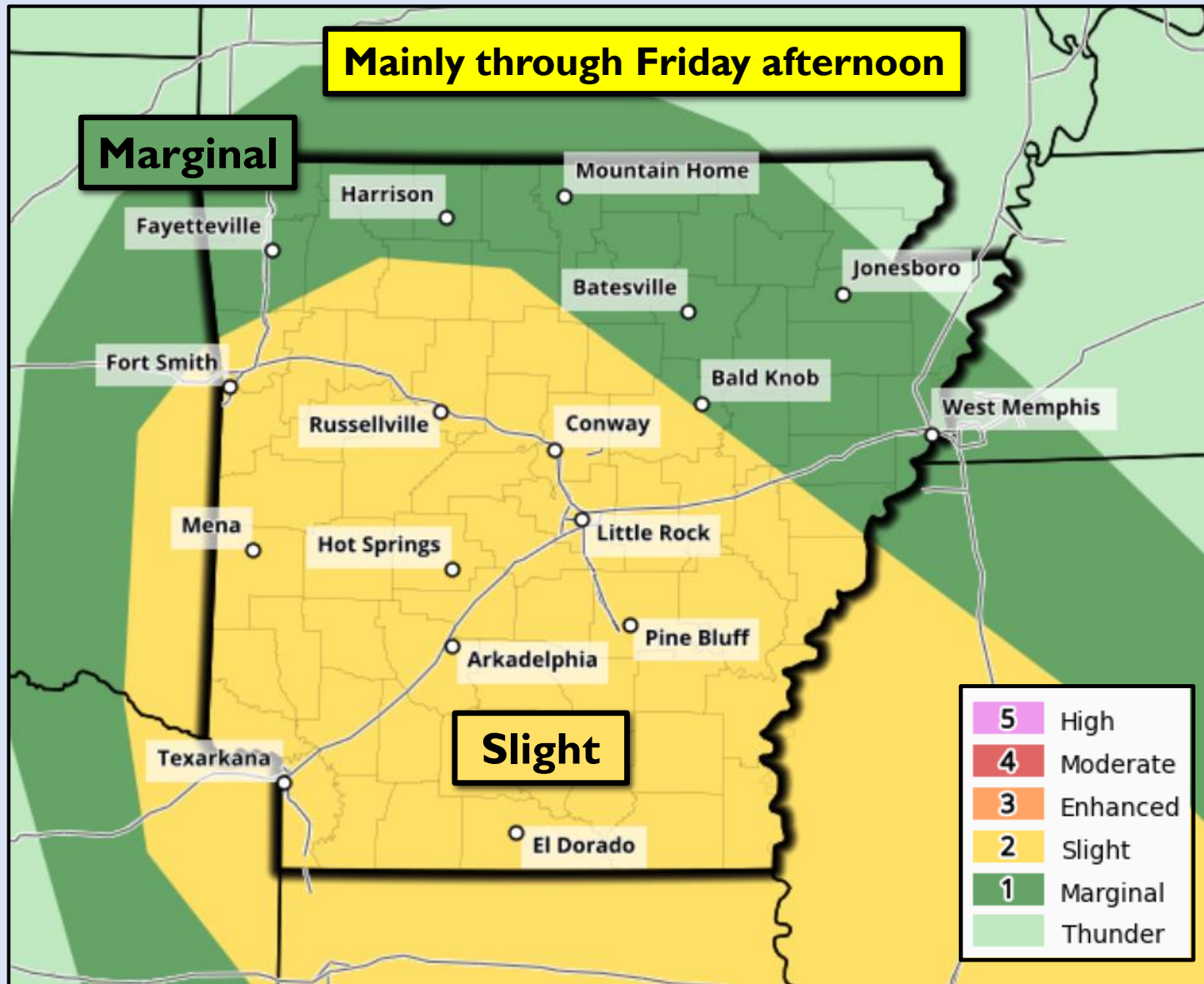
Tornado Potential

- High
- Medium
- Low
- Very Low**

Severe Weather Outlook (June 10)



Thunderstorm risk map valid from Friday 700 AM June 10 through Saturday 700 AM June 11



Maximum Hail Size

Up to Softball

Up to Baseball

Up to Golf ball

Up to Quarter

Maximum Wind Speed

80+ mph

60-80 mph

Up to 60 mph

Tornado Potential

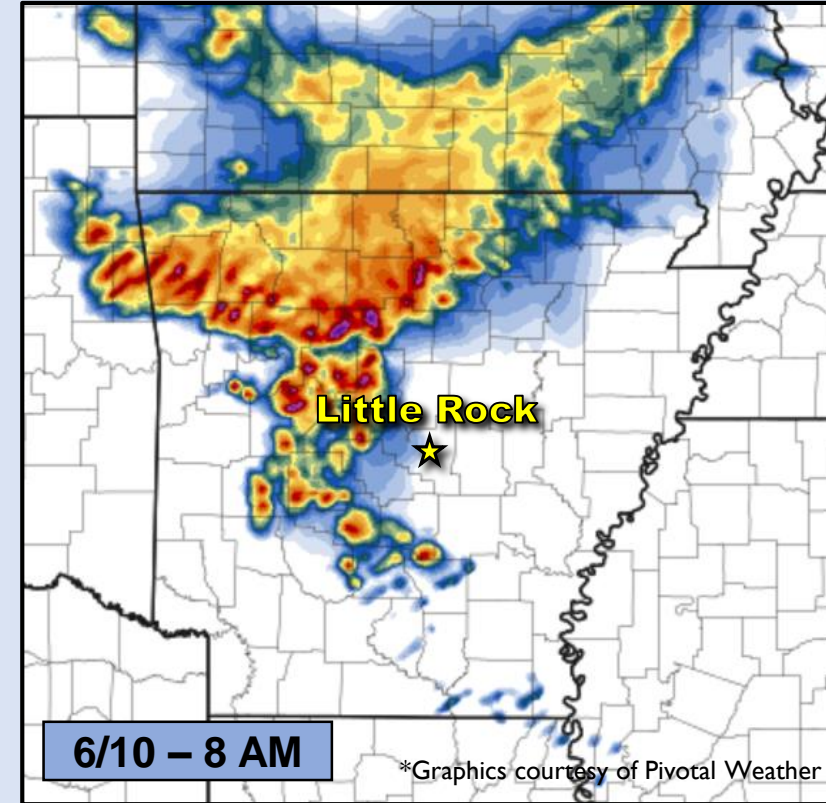
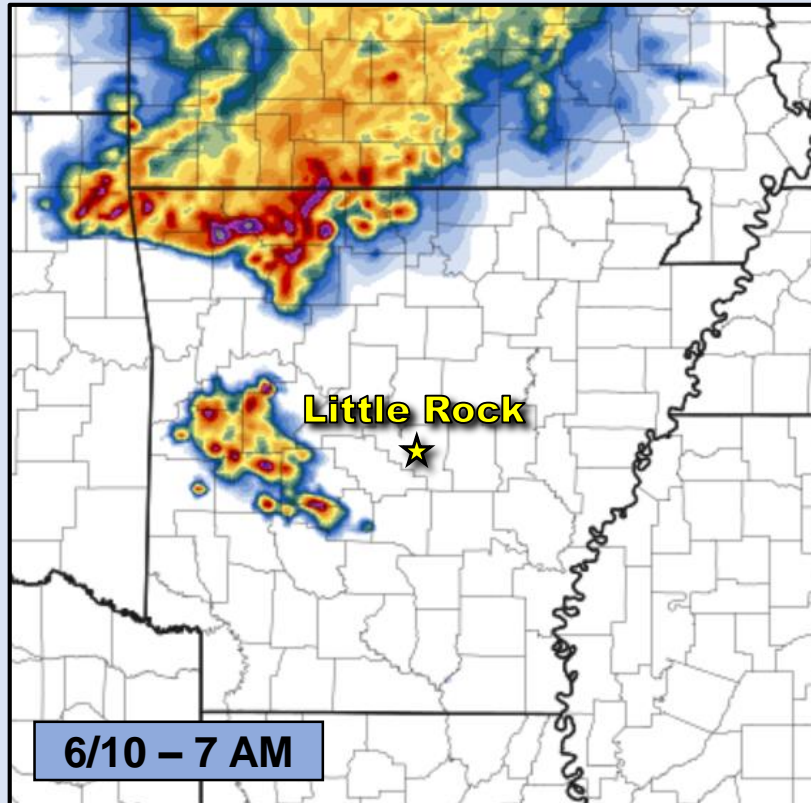
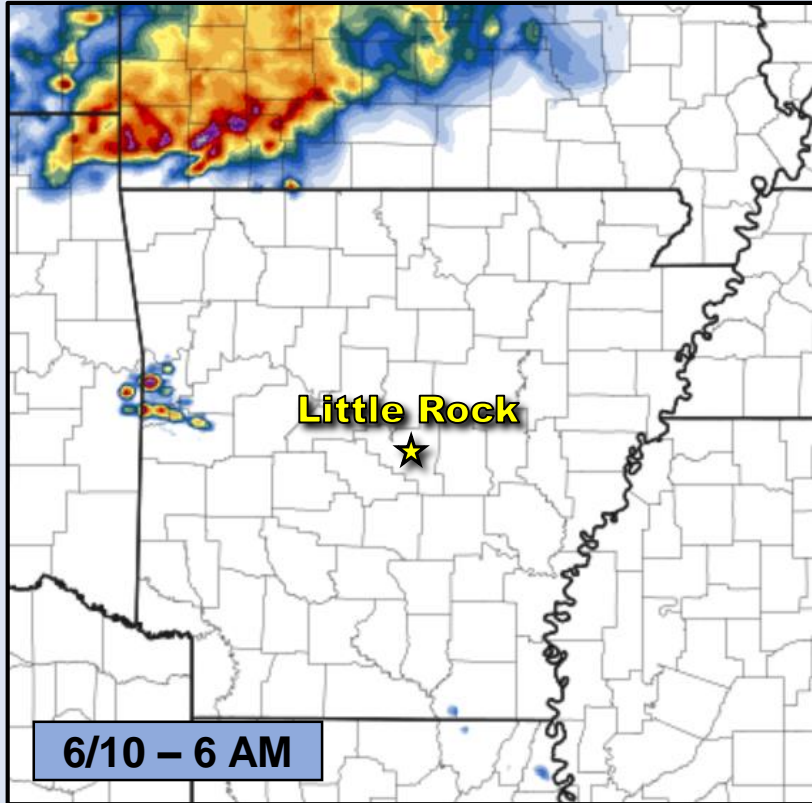
High

Medium

Low

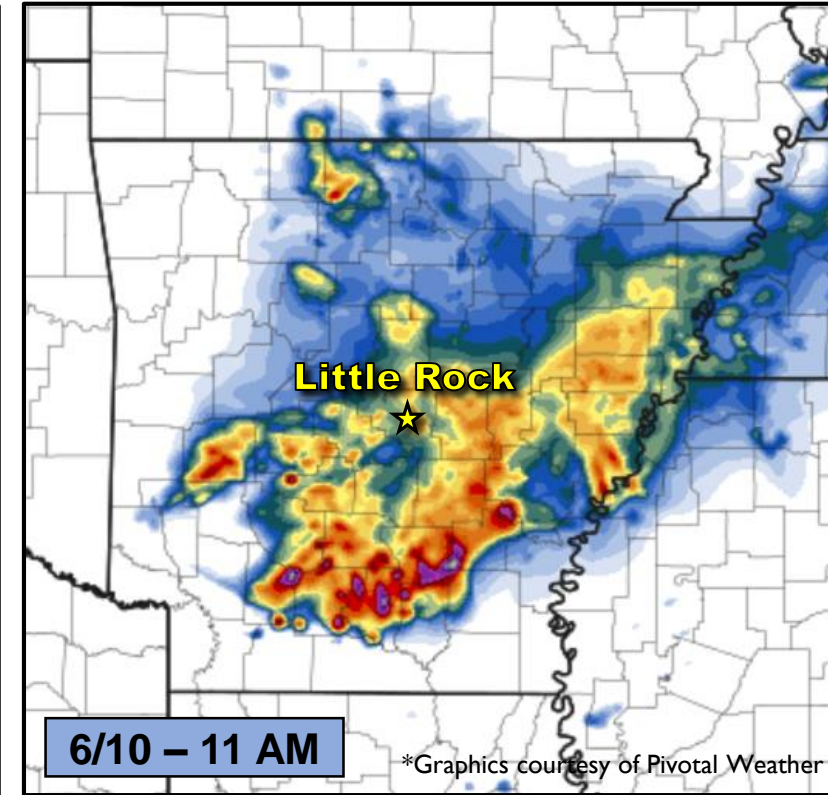
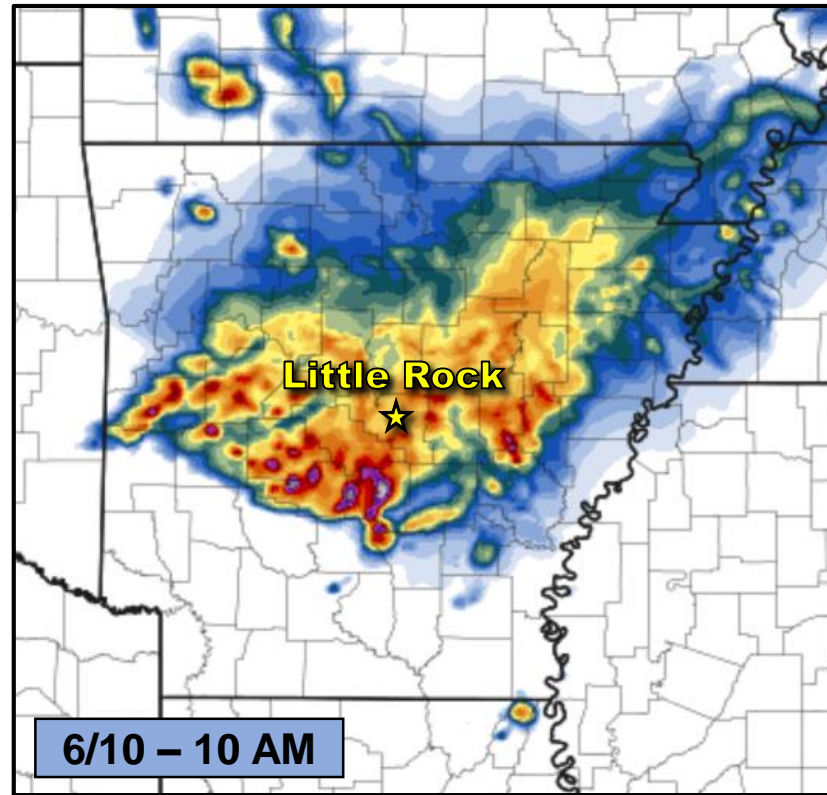
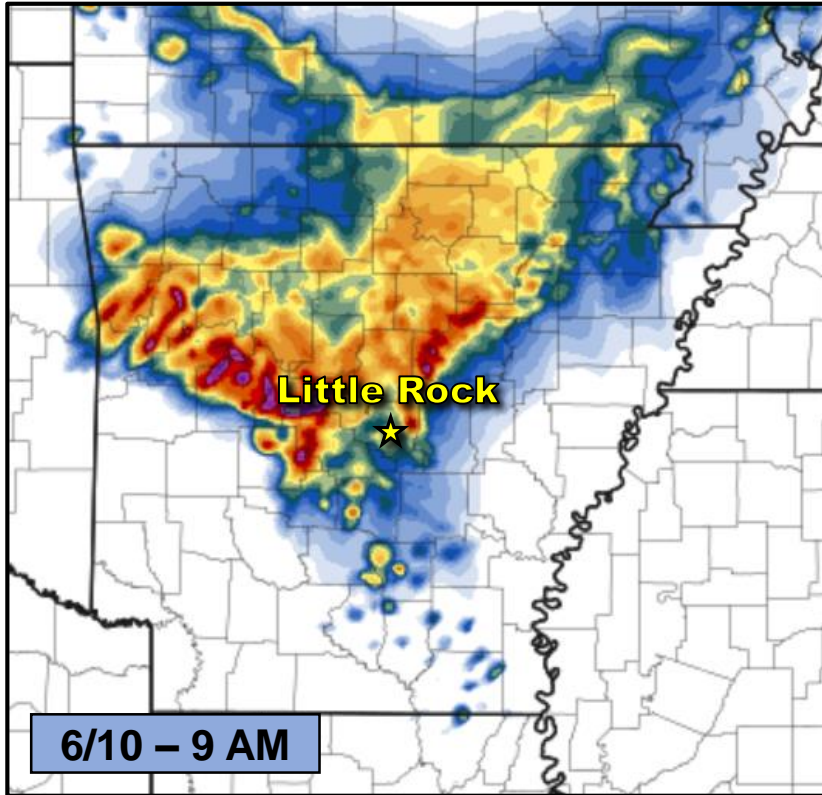
Very Low

Simulated Radar/Timing (June 10)



This is just one run of one weather model and is intended to portray a general idea of what could occur across the state through the early morning hours on Friday. The overall progression and coverage of thunderstorms may be different.

Simulated Radar/Timing (June 10)



This is just one run of one weather model and is intended to portray a general idea of what could occur across the state through the early morning hours on Friday. The overall progression and coverage of thunderstorms may be different.

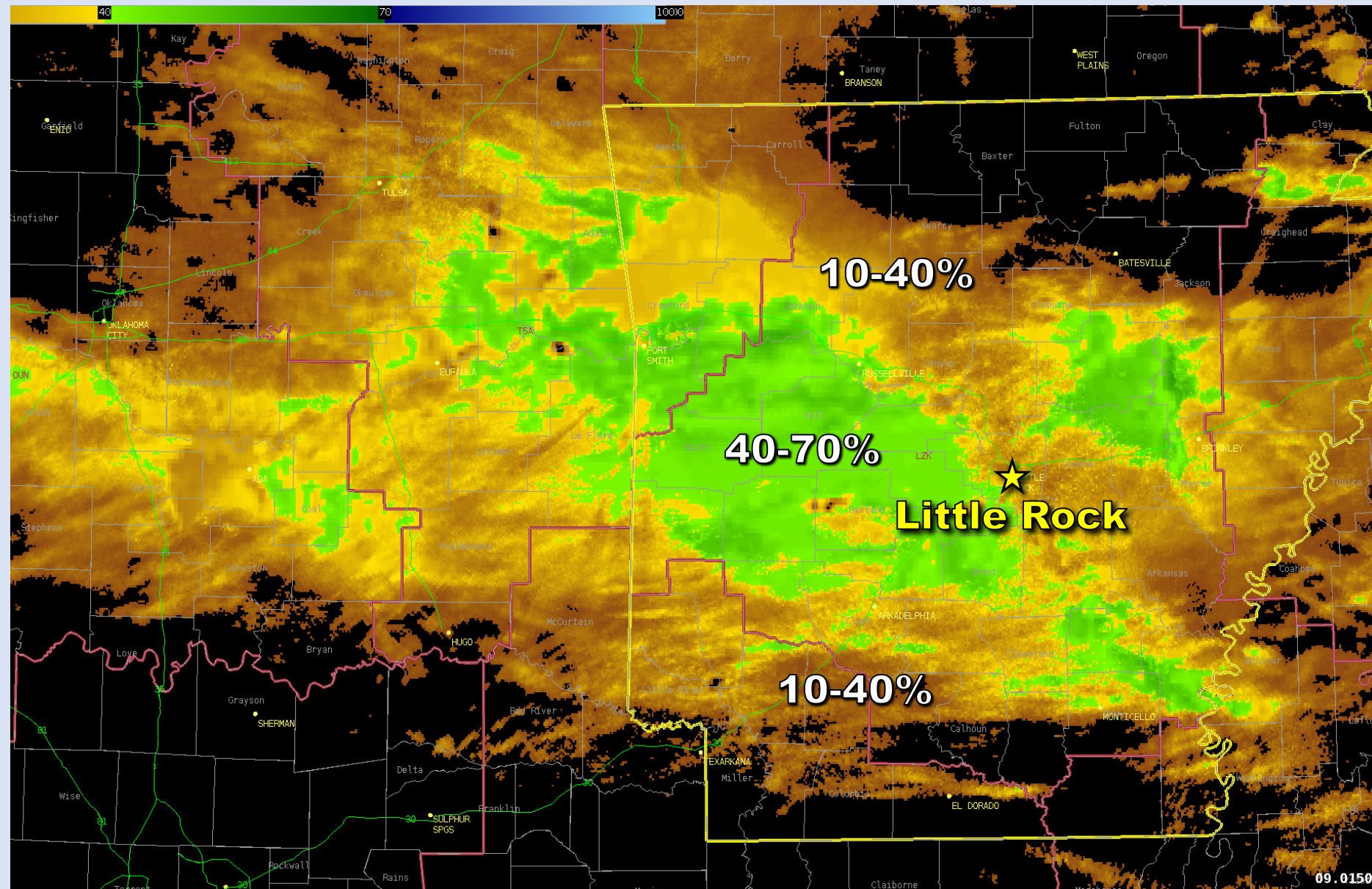
Soil Saturation Across Arkansas



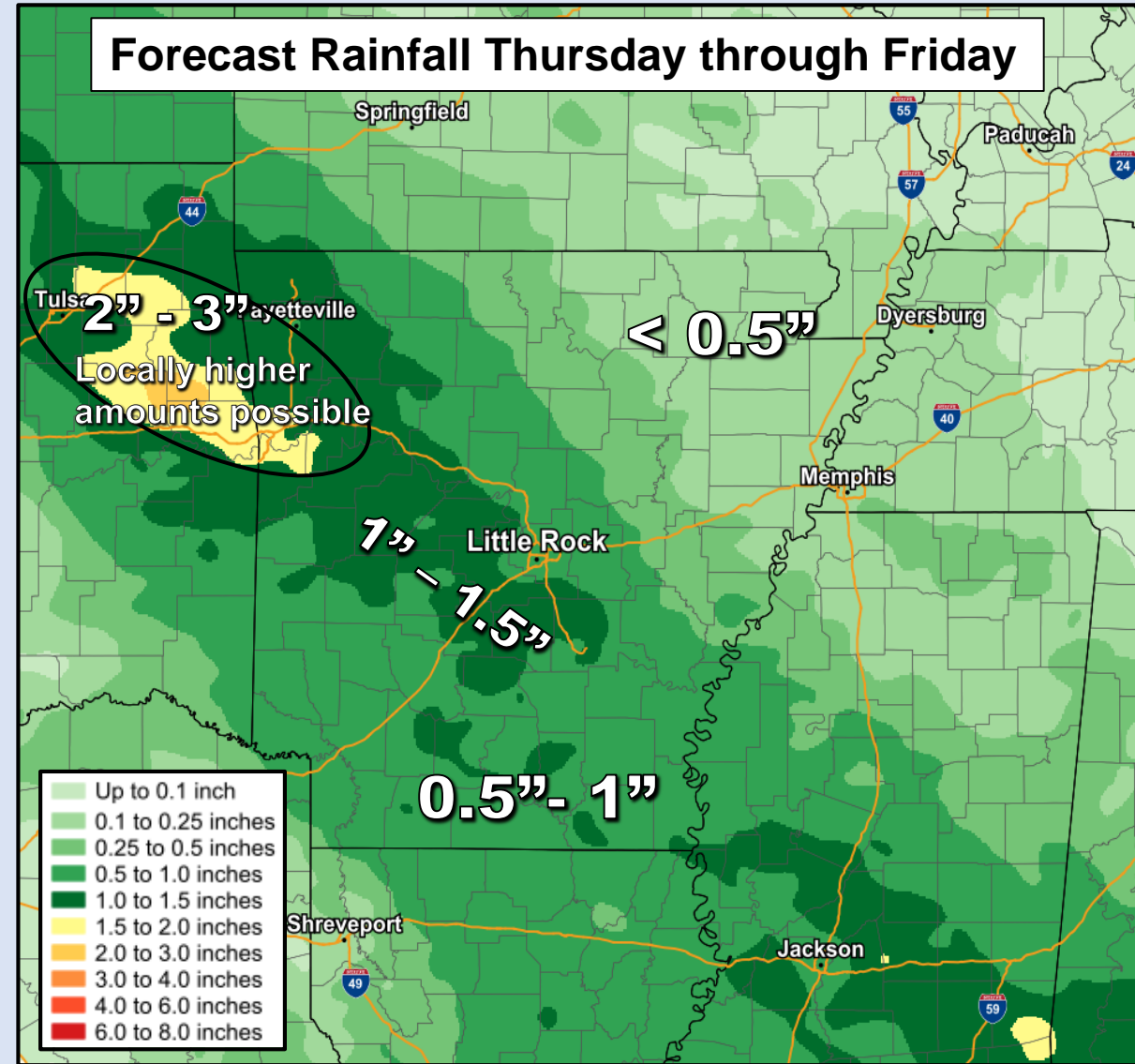
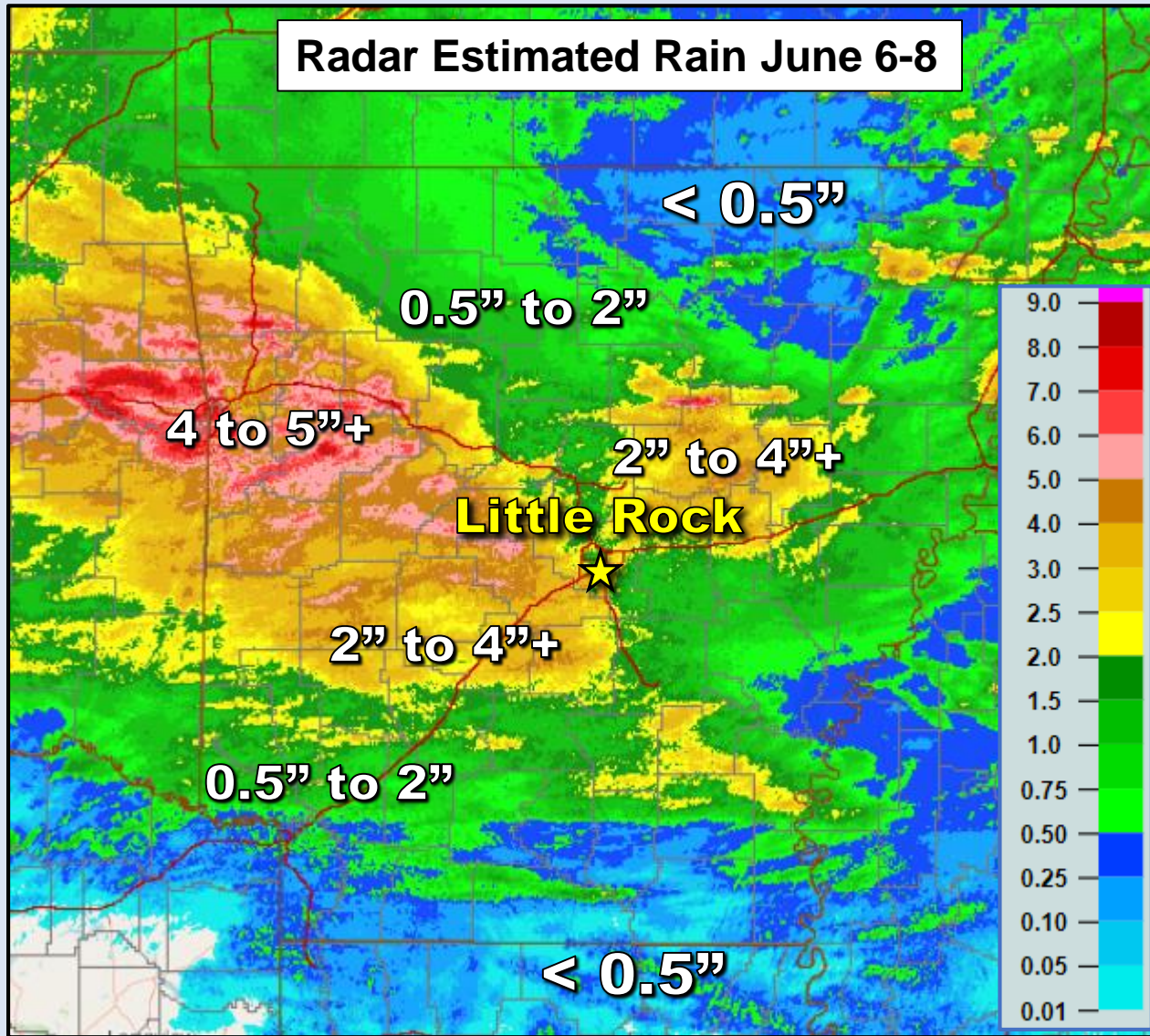
--Recent days of heavy rainfall has lead to large areas of 40% or greater soil saturation over much of the Ouachita Mountains and central Arkansas.

--Smaller pockets of greater than 40% were found over eastern and southeastern Arkansas.

--Increasingly saturated soil surfaces over western central Arkansas will lead to an increased vulnerability to flash flooding with more rainfall expected Thursday night through Friday.

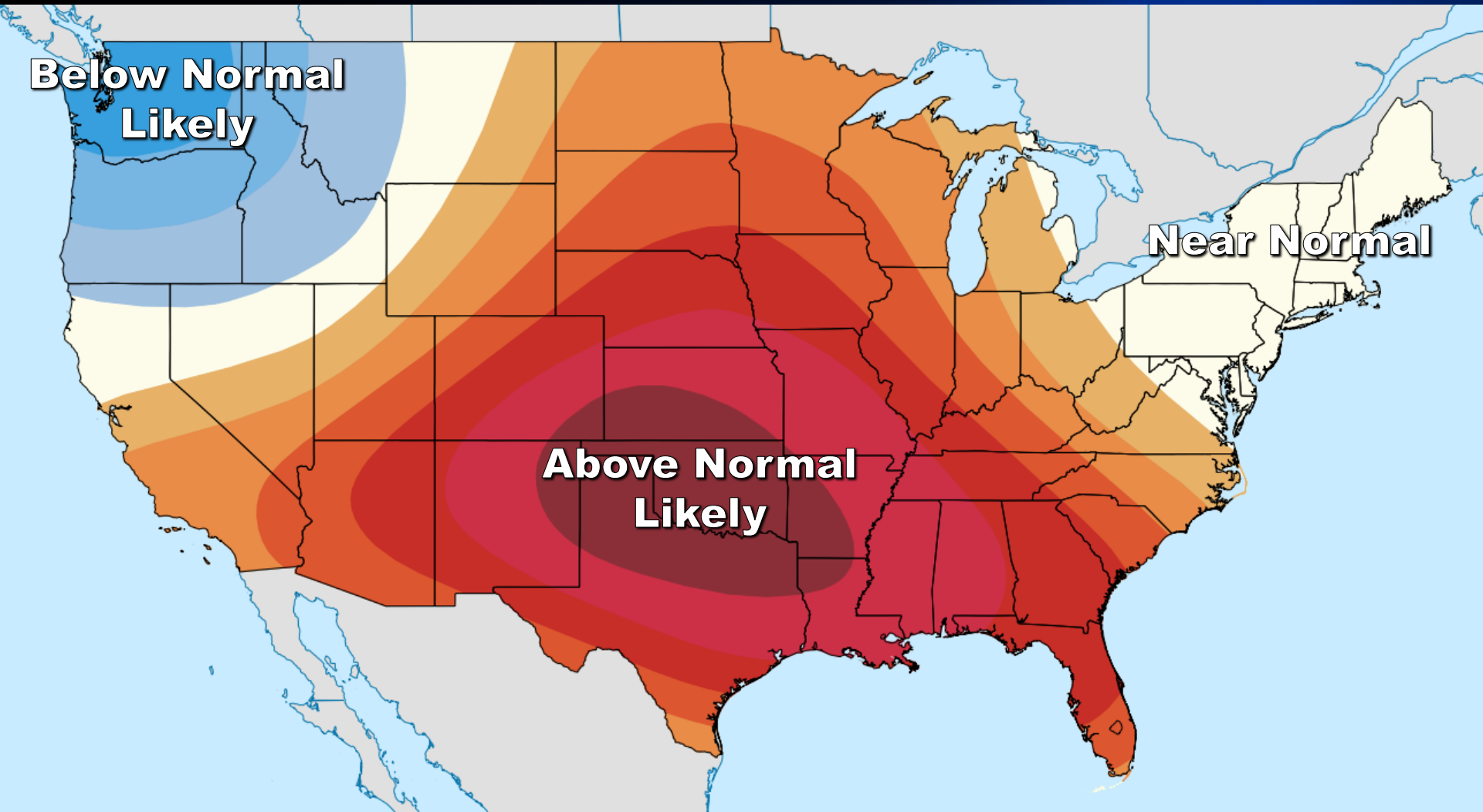


Rain So Far & Expected Rainfall



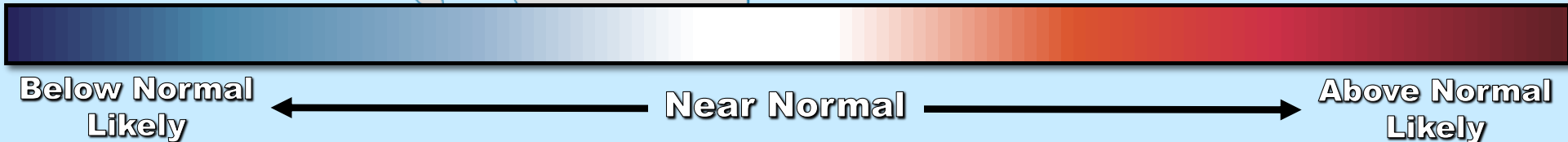
June 13-17 Temperature Outlook

Weather Forecast Office
Little Rock, AR



--The latest guidance from the Climate Prediction Center is indicative of above normal daily high temperatures over much of the southern central U.S. in the coming week.

--Locally, Arkansas will begin to see daily high temps in the mid to upper 90s, and heat index values approaching hazardous levels (in excess of 105F).





For the latest information



Web: <http://weather.gov/LZK>



Phone: (501) 834-0308



E-mail: sr-lzk.forecasters@noaa.gov



Facebook: NWSLittleRock



Twitter: @NWSLittleRock



YouTube: NWSLittleRock